



GEORGIA ASSOCIATION OF INTERNATIONAL EDUCATORS

# Winter '16

## CONFERENCE

CALLAWAY GARDENS  
LODGE & RESORT  
PINE MOUNTAIN, GEORGIA  
FEBRUARY 3<sup>RD</sup> - 5<sup>TH</sup>, 2016





# MISSION

The Georgia Association of International Educators (GAIE) strives to support, encourage, and enhance the field of international education in the state of Georgia. Our members consist of international educators in the fields of education abroad, U.S. immigration, global partnerships, recruitment and admissions, and others. We focus our efforts on the importance of international education in the great state of Georgia!

## GAIE OFFICERS

### SHARE THE LOVE

Don't forget to hashtag  
your posts and photos!

## #GAIE16

### FREE WIFI

Log into:  
The Lodge Wifi network  
No password required



Tran Nguyen, University of Georgia  
**CHAIR**



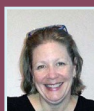
Linnea Tighe, Athens Technical College  
**SECRETARY/TREASURER**



Brett Reichert, Georgia State University  
**WEB MANAGER**



Adam Johnson, College of Coastal Georgia  
**CHAIR-ELECT**

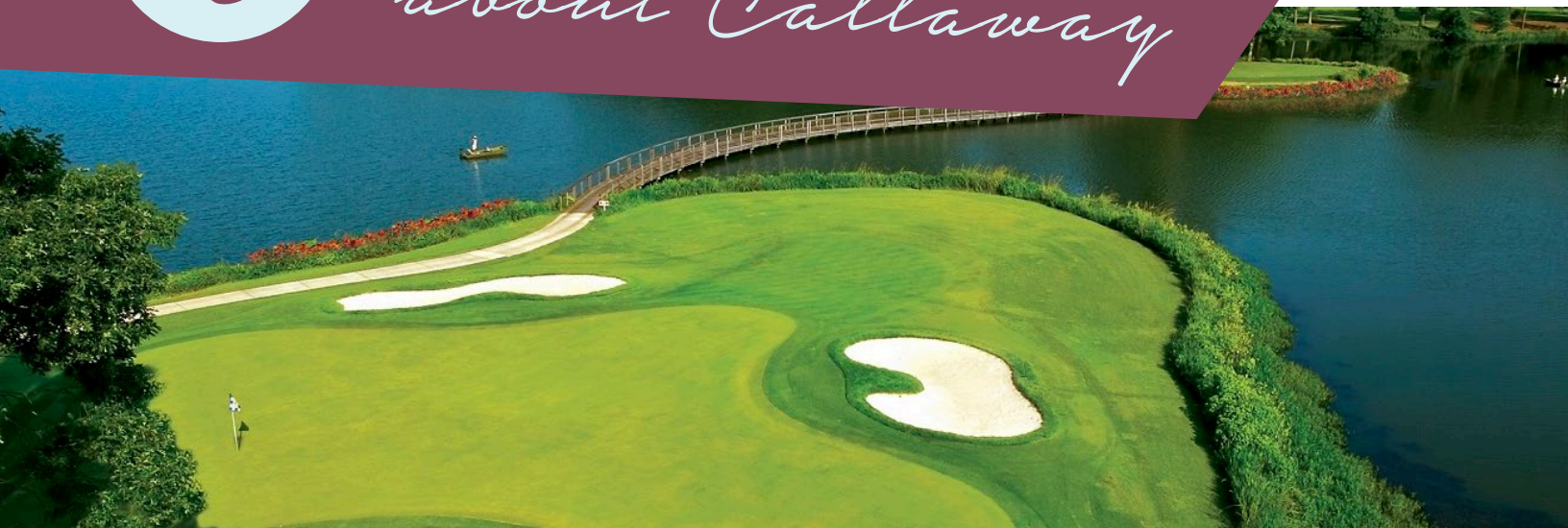


Carolyn Christie, Foreign Credential Evaluation  
**SECRETARY/TREASURER-ELECT**



10

# Random Facts about Callaway



- 1 Callaway Gardens draws over 750,000 visitors annually.
- 2 Robin Lake Beach is the world's largest man-made white sand beach.
- 3 Callaway was founded in 1952 to promote and protect the native azalea species.
- 4 The Cecil B. Day Butterfly Center has 50 species of butterflies.
- 5 If you connected all of the light strings used in Callaway's Fantasy In Lights display, they would stretch more than 725 miles - enough to outline the state of South Carolina.
- 6 The resort complex sits on about 6,500 acres.
- 7 Callaway Gardens is home to the U.S. Kids Golf National Camps.
- 8 The Masters Water-Ski Tournament is held at Callaway annually on Memorial Day Weekend.
- 9 Mr. Cason's Vegetable Garden was the location of various TV shows about growing vegetable gardens.
- 10 The Florida State University Flying High Circus has taken up residence at the beach every summer, since 1961.

Sources for all facts: [callawaygardens.com](http://callawaygardens.com) & Wikipedia





## WINTER GAIE CONFERENCE 2016

## Conference Schedule

EA (Education Abroad)	IEM (International Enrollment Management)	Pan-NAFSA	Other
IEL (International Education Leadership)	ISSS (International Student and Scholar Services)	TLS (Teaching, Learning, and Scholarship)	

## WEDNESDAY, FEBRUARY 3RD

2:30 - 6:00PM	Volunteer Income Tax Assistance (VITA) Workshop, Longleaf A
3:00 - 6:00PM	Check-In & Registration, Hotel Lobby
6:00 - 9:00PM	All-Conference Dessert Reception, Longleaf E

## THURSDAY, FEBRUARY 4TH

7:00 - 4:00PM	Check-In & Registration, Longleaf Pre-function Area			
7:15 - 8:30AM	Breakfast (on your own)			
8:00 - 8:30AM	Mentor/Mentee Morning Coffee Meet-and-Greet, Bayberry 3 & 4			
Rooms	Longleaf A	Bayberry 3 & 4	Longleaf B	Longleaf C & D
8:45 - 9:35AM	Exploring Spring Break Study Abroad Programming	One-Person Office Roundtable	Change is Good-- Maybe?? STEM OPT Regulatory Changes	NCAA Policies and Procedures: Recruiting International Student Athletes
9:45 - 10:35AM	Exchange Programs: Best Practices Forum	Don't Just Tell Them, Show Them: Making Your Case with Data		F-1 Advising: A Two-Part Series (Part 1)
10:35 - 10:55AM	Coffee Break, Longleaf Pre-function Area			
10:55 - 11:45AM	Clery Act Revisited: Best Practices for Study Abroad and International Offices	Managing and Processing International Partnership Agreements - From Ideas to Executed Agreements and More	Preparing for International Student Success through Pre-Arrival Videos	F-1 Advising: A Two-Part Series (Part 2)
12:00 - 1:30PM	Lunch & Plenary Speaker, Longleaf E			
1:45 - 2:35PM	#Success: Comprehensively Engaging International Students at Our Campuses	Misbehavior is an International Challenge	Developing Your Intercultural Competency to More Effectively Work with Diverse Students	Study Georgia -- Consortia for International Student Recruitment
2:45 - 3:35PM	Global Research: Paid International Internship Opportunities for Your Students	Puttin' Out the Ritz: Hosting Top Hat Events on a Cracker Crumb Budget	English Proficiency Test Panel	SEVP Update
3:35 - 3:55PM	Coffee Break, Longleaf Pre-function Area			
3:55 - 4:45PM	Digital Storytelling as a Tool for Reflection on Study Abroad	International Gifts: Best Practices for International Educators	Intercultural Competencies and the International Educator	ICE Update
7:00PM	Group Dinner, Longleaf E			
After Dinner	S'mores Social, Ironwood Courtyard (Rain location: Loblolly A & B)			

FRIDAY, FEBRUARY 5TH				
Rooms	Longleaf A	Bayberry 3 & 4	Longleaf B	Longleaf C & D
7:00 - 9:00AM	<b>Registration, Longleaf Pre-function Area</b>			
8:30 - 9:20AM	Send Your ROTC Students Abroad for FREE!		Best Practices: IEP Special Groups	USG Update
9:30 - 10:20AM	International Education Professional Competencies: Implications for the Field		"If You Build It (Correctly), They Will Come": Strategies for Successful Activity Programming	F-2's - An Introduction
10:20 - 10:40AM	<b>Coffee Break, Longleaf Pre-function Area</b>			
10:40 - 11:30AM	Getting the Word Out: Marketing Strategies for Study Abroad	Technical College System Roundtable	Recent Changes in the World of F-1 OPT Status and Other Developments	A Collaborative Model for International Student Career Development

## Visit the Exhibit Hall

WHEN: Thursday 8:30AM - 4:30PM  
Friday 8:30AM - 11:00AM

WHERE: Longleaf Pre-Function Area



## Raffle Details

WHEN: Thursday 8:30AM - 4:30PM  
Friday 8:30AM - 11:00AM

WHERE: Longleaf Pre-Function Area

PRICE: \$5 per ticket, \$10 for three tickets

Buy your raffle tickets now to raise money for travel grants! The raffle will be held during the last break of the day and you must be present to collect your prize. Also, spin BINGO and win some cool prizes donated from all over the state – only \$1 per spin!

Check the table to see raffle items.





# *Plenary Speaker*

## SHEA TIGHE

Shea Tighe is the National Director of Engagement for STEM Premier: a company that provides the first online solution to assist students in designing a career pathway, educators in recruiting top emerging talent to their schools, and employers in developing a stable, continuous future talent pipeline. Shea's experience in a diverse array of industries - marketing, planning, design, and public relations - allows him to wear many different hats. He currently directs all K-12 and post-secondary engagement nationally, leads all marketing and front-end web design efforts, and supports the leadership team in strategic planning.

STEM Premier has created an ecosystem that brings together:

- Current & Future Talent from middle school and high school to college and PhD
- Resources, including scholarship opportunities, internships, and career opportunities
- Mentorship
- Teachers
- Guidance Counselors
- Parents
- Colleges & Universities
- Companies & Corporations

Shea will be sharing his insight into the topic of fostering professionalism in college students.



**STEM**Premier™





*Wednesday, February 3rd*

**2:30 - 6:00PM PRE-CONFERENCE WORKSHOP,  
Longleaf A**

**VITA Workshop - Volunteer Income Tax Assistance (VITA)**

This free workshop aims to prepare participants to pass the IRS VITA certification tests by giving an overview of key non-resident alien tax concepts, calculations, and vocabulary. The VITA certification can be invaluable not only for the knowledge you'll gain, but also for the legal protection it provides as you assist your students and scholars. You will learn how to answer basic tax questions, where to direct the more complicated cases, and how to best utilize the tax tools GLACIER and Sprintax.

*Doug Podoll, Georgia Institute of Technology*

**3:00 - 6:00PM CHECK-IN & REGISTRATION, Hotel Lobby**

*Thursday, February 4th*

**7:00AM - 4:00PM CHECK-IN & REGISTRATION,  
Longleaf Pre-Function Area**

**7:15 - 8:30AM BREAKFAST (ON YOUR OWN)**

**8:00 - 8:30AM MENTOR/MENTEE COFFEE MEET-AND-GREET,  
Bayberry 3 & 4**

**8:45 - 9:35AM SESSION BLOCK 1**

**Exploring Spring Break Study Abroad Programming, Longleaf A**

As spring break study abroad programming is becoming a more common option, this presentation will trace some of the history & development of spring break study abroad programs at Georgia State University. Over the past two years, we have seen an increase in faculty and student interest in this type of programming, but it has not been without its challenges. Questions and discussion are welcome!

*Stephen Murray, Georgia State University*

**One-Person Office Roundtable, Bayberry 3 & 4**

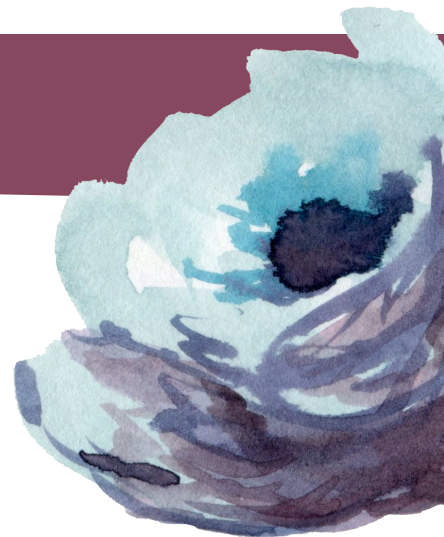
This session will focus on one and small person offices. Questions will be solicited from participants with the goal of supporting efforts for our colleagues in small offices.

*Jordan Anderson, Brenau University*

*Sarah Speir, Georgia Southwestern State University*

**Change is Good -- Maybe?? STEM OPT Regulatory Changes, Longleaf B**

This session will give an update on the proposed regulatory changes to STEM OPT and look at the impacts on international students, academic immigration offices, and employers.





*Robin Catmur, University of Georgia*  
*Marisa Atencio, Georgia Institute of Technology*

### **NCAA Policies and Procedures: Recruiting International Student Athletes, Longleaf C & D**

The NCAA is a non-profit association which regulates athletes of 1,281 institutions; conferences; organizations; and individuals. It also organizes the athletic programs of many colleges and universities in the United States and Canada, and helps more than 450,000 college student-athletes who compete annually in college sports.

The presenter was an international student from South Africa who received a tennis scholarship in the U.S., and has now been working at UGA for 8 years. She works with UGA's 57 international student athletes from over 37 different countries, and guides them through the clearing house, application process, and immigration visa process. She will be discussing NCAA policies and how US universities recruit international student athletes.

*Chenelle Goyen, University of Georgia*

### **9:45 - 10:35AM SESSION BLOCK 2**



#### **Exchange Programs: Best Practices Forum, Longleaf A**

In an open forum setting, this session allows attendees to share best practices for exchange programs. Topics addressed will be relevant to education abroad advising, international student services, managing exchange partnerships/agreements, and international education leadership.

*Emily Caskey, Georgia State University*

*Kimberly Lawrence, Georgia State University*

#### **Don't Just Tell Them, Show Them: Making Your Case with Data, Bayberry 3 & 4**

This session will help participants think through the process of providing data to the larger campus community and will showcase examples of international reports (including their development and evolution). Participants will leave understanding how thoughtful data visualization can help raise the profile of international education on their campus.

*Maggie Miller, Georgia Institute of Technology*

#### **F-1 Advising - Part 1: A 2-Part Series, Longleaf C & D**

From basics to the grey areas of F-1 Student advising, this two-part series will cover the day-to-day work, hot-topics, institutional policy making strategies, and a Q&A surrounding student advising.

*Ashley Johnson, University of Georgia*

*Marie Goodwin, University of Georgia*

### **10:35 - 10:55AM COFFEE BREAK, Longleaf Pre-function Area**

### **10:55 - 11:45AM SESSION BLOCK 3**



#### **Clery Act Revisited: Best Practices for Study Abroad and International Offices, Longleaf A**

Please join presenters from the University System of Georgia and a leading private college in a review of the updated Clery Act. Presenters will discuss how they handle the reporting requirements in regards to study abroad programs, as well as the additional implications of the act for international student offices.

*Lacey Kondracki, BOR - University System of Georgia*

*Julie Strecker - Mercer University*

#### **Managing and Processing International Partnership Agreements – From Ideas to Executed Agreements and More, Bayberry 3 & 4**

With the growing commitment to internationalization, higher education institutions within the Board of

Regents are engaging more and more partners formally. This is resulting in an increase in the number and variation of agreements being negotiated. Between Letters of Intent, Memoranda of Cooperation/Understanding, and Program Specific Agreements, universities are investing time in what is turning out to be elaborate processes for negotiating, initiating, tracking, executing and renewing collaboration agreements that express relationships that range from establishing formal friendships to complex programs.

This session will review the processes Georgia State University implements to manage its internal and external negotiations in order to initiate, approve, and execute its agreements. It will share information on using templates to speed up the review process as well as the systems involved in tracking data and workflows associated with agreements processing. Following the session, attendees should be able to use the information about their university's culture to determine internal stakeholders who will support the approval of their agreements. They may also be able to develop, or come away with, ideas of customized or purchased systems with which to manage their agreements.

*Mike Ehigiator, Georgia State University*

*Kathleen Campbell, Georgia State University*

### **Preparing for International Student Success through Pre-Arrival Videos, Longleaf B**

International students face many challenges coming to the US to study, especially for the first time. We must do our best to provide them necessary information before they arrive and equip them to be successful. We will share what we have learned regarding pre-arrival communication and online orientation videos.

*Mike Townsend, Georgia State University*

*Brett Reichert, Georgia State University*

### **F-1 Advising - Part 2: A 2-Part Series, Longleaf C & D**

From basics to the grey areas of F-1 Student advising, this two-part series will cover the day-to-day work, hot-topics, institutional policy making strategies, and a Q&A surrounding student advising.

*Ashley Johnson, University of Georgia*

*Marie Goodwin, University of Georgia*

**12:00 - 1:30PM LUNCH & PLENARY SPEAKER, Longleaf E**

**1:45 - 2:35PM SESSION BLOCK 4**



### **#Success: Comprehensively Engaging International Students at Our Campuses, Longleaf A**

This session will highlight the comprehensive approach Kennesaw State University's Office of International Student Retention Services uses to engage international students beyond immigration compliance and academic majors. The objective of the session is to highlight ways that International Services offices and staff can provide services and programs that involve international students in their own learning and personal and social engagement while at our universities. The session will also address perceived challenges to engaging international students beyond, and in addition to, their academic pursuits and emphasis on immigration compliance.

*Catherine Odera, Kennesaw State University*

### **Misbehavior is an International Challenge, Bayberry 3 & 4**

The most overlooked misconception in international education today is that students come to school with the social skills needed for learning to take place. Research shows an average classroom teacher loses between five to nine hours per week dealing with low-level pesky behaviors.

Frustrated by students' misbehaviors? Dealing with discipline matters taking up valuable teaching time? I'll share some core beliefs and introduce you to theories that help you understand the impact of low level inappropriate behaviors on your students and classroom. Learn "8:00 Monday morning" research-based

strategies for a fair and simple classroom management system that will eliminate unwanted behaviors by 70% or more. Learn the essential steps of teaching to expected behaviors and discover the benefits and the importance of positive interactions with your students. Learn how to dramatically increase the amount of time you spend on instruction and decrease the amount of time giving multiple warnings and repeated requests to stop misbehavior. Learn how investing extra time in your students at the beginning of the year increases the amount of time you have for instruction throughout the year. Reduce your, and your students', stress level while creating a working relationship that is built on care and respect.

*Peter Vajda, Center for Teacher Effectiveness*

### **Developing Your Intercultural Competency to More Effectively Work with Diverse Students, Longleaf B**

Central to the development of intercultural communication competency, on the part of both international education professionals and students, are self- and other-awareness. In this hands-on session, we will discuss and practice various methods of cultural discovery - of ourselves and of those around us - that you can use for yourself, as well as pass on to incoming and outgoing students and scholars struggling with cultural adjustment.

*Kris Acheson-Clair, Georgia State University*

*Marinelly Piñango*

### **Study Georgia - Consortia for International Student Recruitment, Longleaf C & D**

This is a session for both current and potential members of a group called Study Georgia. Study GA is a consortia of about 30 colleges and universities working together to increase the name recognition of their respective destinations and educational institutions; to promote their areas to international students; to facilitate partnerships between educational institutions in their areas and those in other countries; and to capitalize on the services of U.S. federal and state government agencies. The session will cover reasons why you should consider using Study GA as one of your international student recruiting tools and will also serve as the consortia's annual business meeting to review 2015 activities, elect new officers, vote on changes to the bylaws, go over the website changes and new marketing materials, and to discuss 2016 activities.

A brief update from the Systems Council on International Education (SCIE) will also be offered.

*Chenelle Goyen, University of Georgia*

*Amy Ryan, U.S. Department of Commerce*

*Robin Catmur, University of Georgia*

## **2:45 - 3:35 PM SESSION BLOCK 5**



### **Global Research: Paid International Internship Opportunities for Your Students, Longleaf A**

In this session we will discuss the wide variety of international research internship opportunities that are available to students studying at U.S. institutions.

*Allison Noffsinger, Georgia Institute of Technology*

### **Puttin' Out the Ritz: Hosting Top Hat Events on a Cracker Crumb Budget, Bayberry 3 & 4**

If you're like the presenters, you might be asked (frequently) to plan high-quality events on a shoestring budget. Session presenters will use one of their recent events as an example, breaking down the planning and decision-making stages all the way to the Thank You cards afterwards. Key take-aways of the session include: developing a budget, crafting a marketing plan, identifying on- and off-campus resources, gaining co-worker buy-in, and identifying lessons learned. Audience members are encouraged to share their own best practices for event planning.

*Amanda Roshan-Rawaan, Georgia State University*

*Homma Rafi, Georgia State University*

### **English Proficiency Test Panel, Longleaf B**

This year, the University System of Georgia updated the list of approved English Language Proficiency tests that can be used to prove English language proficiency for admission. Please join our panel of pre-



senters from Pearson (PTE) Academic and Cambridge English to learn more about some of the newly-approved tests and how your school can begin accepting them for admission.

*Tammy Rosner, BOR - University System of Georgia*

*Brian Chu, EIKEN*

*Lauren MacDonald, Cambridge English*

*Andrea Scott, IELTS*

*Meredith Stokes, PTE Academic Consultant*

### **SEVP Update, Longleaf C & D**

SEVP presenters will discuss policy and regulatory updates, School Certification Unit updates, student and school hot topics, SEVIS enhancements, and stakeholder support and engagement. Q&A to pre-submitted questions will follow.

*Holly Williams, NSID/HIS/ICE/DHS*

*Rebecca Andre, NSID/HIS/ICE/DHS*

## **3:35 - 3:55PM COFFEE BREAK, Longleaf Pre-function Area**

## **3:55 - 4:45PM SESSION BLOCK 6**

### **Digital Storytelling as a Tool for Reflection on Study Abroad, Longleaf A**

Research shows in order for students to gain the full benefits from their study abroad experiences, they must spend time in guided, critical reflection. Digital Storytelling can be a useful tool for this kind of reflection. In this session, we will examine the effectiveness of digital stories completed by UGA students who spent several weeks studying abroad in Australia and New Zealand, and present the various types of learning evident in those digital stories.

*Ali Hamilton, University of Georgia*

### **International Gifts: Best Practices for International Educators, Bayberry 3 & 4**

This session will address the perennial conundrum of buying and giving gifts for international visitors and/or on international trips. Using survey data collected from colleagues in Georgia, we will look at common challenges in buying gifts and share gift ideas. This session will be an opportunity for attendees to ask questions and to share their own strategies and is suitable for all NAFSA knowledge communities.

*Amanda Roshan-Rawaan, Georgia State University*

### **Intercultural Competencies and the International Educator, Longleaf B**

NAFSA acknowledges the need for international educators to possess intercultural competencies. In this session there will be guided exercises to help participants clarify areas in their work life that might demand such competencies and also to create a plan of action for building the needed intercultural skills. In the first part of the session we will briefly review central intercultural concepts, do some self-reflection, and think about our interactions with others. Then, we'll generate some strategies to build competencies.

*Claire Jennings*

*Lisa Vu*

### **ICE Update, Longleaf C & D**

A special agent from Immigration and Customs Enforcement Homeland Security Investigations Unit will provide general updates and will take questions from conference attendees, as well as addressing any questions submitted in advance of the conference.

*Kevin Heerlein, Special Agent*

## **7:00PM GROUP DINNER, Longleaf E**

## **After Dinner S'MORES SOCIAL, Ironwood Courtyard**



Friday, February 5th

**7:00 - 9:00AM REGISTRATION,  
Longleaf Pre-function Area**

**8:30 - 9:20AM SESSION BLOCK 7**

**Send Your ROTC Students Abroad for FREE! Longleaf A**

Project GO sponsors summer intensive language programs designed specifically for ROTC students. This session will provide information on the Project GO scholarships available to ROTC cadets nationwide.

*Daniela Martinez, University of North Georgia*

*Samantha Yourstone, University of North Georgia*

**Best Practices: IEP Special Groups, Longleaf B**

This session will explore working with three different types of special groups within an IEP: university-based programs, governmental programs, and corporate programs. Learn how to modify your practices and policies to best work with these groups. Topics discussed will include registration, student services, and business operations for each type of special program you may encounter.

*Anna Potter, Georgia Institute of Technology*

*Kate Kirk, Georgia Institute of Technology*

**USG Update, Longleaf C & D**

The Office of International Education at the Board of Regents of the University System of Georgia will hold a meeting for all member institutions to review current issues, recent developments and upcoming training in all areas of international education.

*Tammy Rosner, BOR - University System of Georgia*

**9:30 - 10:20AM SESSION BLOCK 8**

**International Education Professional Competencies: Implications for the Field, Longleaf A**

What are the cross-cutting skills and knowledge that all international educators need? How can the International Education Professional Competencies be used at the individual, team, division, institution and field level? Join your colleagues to learn about NAFSA's recently-published international education statements and their implications for the field. (Note: this session was presented at the NAFSA Region VII conference.)

*Amanda Roshan-Rawaan, Georgia State University*

*Maggie Miller, Georgia Institute of Technology*

**"If You Build It (Correctly), They Will Come:" Strategies for Successful Activity Programming, Longleaf B**

Whether you want to create a full activity program, or improve what you already have, this session will explore program creation and implementation for international students from the perspective of a full-time program coordinator. You will leave the session with the tools to start building your own comprehensive strategy for programming.

*Jamienne McKee, Mercer University's English Language Institute*

**F-2's - An Introduction, Longleaf C & D**

Presenters will give an overview of updates regarding F-2 students, including recruitment, advising lim-

itations, opportunities for students, and programming ideas going forward.

*Linnea Tighe, Athens Technical College*

*Tyler Askew, Georgia State University*

*Cortney Johnson, Georgia Institute of Technology*

## **10:20 - 10:40AM COFFEE BREAK, Longleaf Pre-function Area**

## **10:40 - 11:30AM SESSION BLOCK 9**



### **Getting the Word Out: Marketing Strategies for Study Abroad, Longleaf A**

Each university faces its own issues with getting the word out about study abroad -- large universities may feel as if their message is lost in a sea of voices, while a smaller university must make do with fewer staff members. What are concrete ways Study Abroad Offices can spread the word and what are tools that can make our lives easier? How can we make connections to the university population at large to reach the maximum number of students? What portion of program recruitment falls on program directors and what resources/support do study abroad offices offer to faculty members?

This session will address marketing concerns from the perspective of both a larger university and a smaller university and discuss the similarities and differences in obstacles we face in trying to reach students. We hope to use this session to bounce ideas off others in the field, learn from what other universities are doing, and foster a culture of exchange among international educators in Georgia.

*Emily Caskey, Georgia State University*

*Kory Saunders, Columbus State University*

### **Technical College System Roundtable, Bayberry 3 & 4**

This session will be an interactive and informal opportunity to discuss issues and ask questions that are directly related to International Student admission, procedures and regulations at the technical colleges.

*Carolyn Christie, Foreign Credentials, Inc.*

### **Recent Changes in the World of F-1 OPT Status and Other Developments, Longleaf B**

The presenter will discuss recent changes in STEM OPT status for post-graduate students and what will likely be happening in 2016; the new visa bulletin and how it works; EADs for H-4 spouses; updates regarding in-state-tuition; and any other current events that may develop before the conference.

*Danielle Claffey, Kuck Immigration Partners LLC*

### **A Collaborative Model for International Student Career Development, Longleaf C & D**

In today's higher education landscape, there are growing visa limitations, a record number of international students coming to study in the USA, and an increasing importance for universities to place students in jobs related to their major. Many international students come to the USA with high hopes of finding a job after graduation, only to be disappointed with the limited opportunities. Helping international students in their job readiness and search process is multifaceted and should be a collaborative effort between many offices.

In the last few years, Emory has engaged in an exciting new collaboration and program in order to provide more support for international students in their career development. This presentation will discuss some of the trends of job readiness and support, how Emory has engaged in the career development of international students, and then time at the end for further discussion and best practices. This is an important topic that should not be limited to the career centers on campus or just international student offices providing guidance on immigration regulations. It should be an integrative process in order to prepare international students holistically.

*Natalie Cruz, Emory University*

*Christy Bradley, Emory University*



## NAFSA REGION VII LEADERSHIP



Angela Guinyard  
Emory University  
CHAIR ELECT



Sylvia Schell  
University of Georgia  
GEORGIA STATE REP

## GEORGIA TRAINER CORPS

Marisa Atencio, Georgia Tech  
Dariusz Baran, Emory University  
Robin Catmur, UGA  
Angela Guinyard, Emory University  
Sandy Haagen, UGA  
Charlie Hammons, Georgia Tech  
Shinn Ko, Emory University

Lorie Paulez, Georgia Tech  
Amanda Roshan-Rawaan, Georgia State  
Sandi Smith, Thomas University  
Sara Spiegler, Georgia Tech  
Katie Tudini, Georgia Tech  
Gwen Wade, Clark Atlanta

## TRAVEL GRANT RECIPIENTS

ALI HAMILTON  
University of Georgia

ALLISON NOFFSINGER  
Georgia Institute of Technology

## CONFERENCE PLANNING COMMITTEE

Brenda Austrie-Cannaday, Mercer University  
Nicole Baker, Mercer University  
Camille Lialios, University of North Georgia  
Carolyn Christie, Foreign Credential Evaluations, Inc.  
Ronda Dowell, University of North Georgia  
Clementine Hakizimana, Agnes Scott  
Jennifer Hernandez, KEI Abroad  
Cortney Johnson, Georgia Tech  
Erin Kothari, Georgia State  
Linnea Tighe, Athens Tech

Jamienne McKee, Mercer University  
Maggie Miller, Georgia Tech  
Tran Nguyen, UGA  
Lisa Peters, GPTC  
Homma Rafi, Georgia State  
Michele Raphoon, LaGrange College  
Brett Reichert, Georgia State  
Tammy Rosner, USG  
Bill Schofield, Music Empowerment Project

# Menus

## LUNCH/PLENARY

Thursday, February 4th

Southwestern Black Bean and Corn Salad  
Grilled Chicken Fajitas  
Carne Asada  
Chiffonade of Lettuce, Jalapenos,  
Cheddar Cheese, Sour Cream  
Guacamole and Mild Salsa  
Refried Black Beans  
Authentic Spanish Rice  
Steamed Flour Tortillas  
Caramel Flan

## DINNER

Thursday, February 4th

Loaded Baked Potato Salad  
Creamy Cole Slaw  
Mesquite Barbecued Pulled Pork  
Southern Fried Free Range Chicken  
Buttery Corn on the Cob  
Oven Roasted Sweet Potatoes, Marshmallow Crème  
Southern Style Green Beans with Bacon and Onions  
Honey Cornbread Muffins  
Bread Pudding with Bourbon Sauce



## Colleges, Universities, and Organizations Represented

Abraham Baldwin Agricultural College  
Albany State University  
Athens Technical College  
Atlanta Metropolitan State College  
Board of Regents - USG  
Brenau University  
Cambridge English  
Center for Teacher Effectiveness  
Central Georgia Technical College  
Chattahoochee Technical College  
Clayton State University  
College of Coastal Georgia  
Columbia Theological Seminary  
Columbus State University  
Columbus Technical College  
Dalton State College  
EIKEN Foundation of Japan  
Emory University

English for Internationals, Inc.  
Foreign Credential Evaluations, Inc.  
Fort Valley State University  
Georgia College  
Georgia Gwinnett College  
Georgia Institute of Technology  
Georgia Piedmont Technical College  
Georgia Southern University  
Georgia Southwestern State University  
Georgia State University  
Georgia Tech Language Institute  
Gordon State College  
IELTS USA  
International Studies Abroad  
Kennesaw State University  
Kuck Immigration Partners LLC  
LaGrange College  
Mercer University

Mercer's English Language Institute  
Morehouse School of Medicine  
Oglethorpe University  
Oxford College of Emory University  
Pearson Test of English  
Piedmont College  
Sprintax  
Student and Exchange Visitor Program  
Tallulah Falls School  
Terra Dotta  
U.S. Department of Commerce  
Universidad Complutense de Madrid  
University of Georgia  
University of North Georgia  
University of West Alabama  
Wesleyan College



# BREAK FREE

Save Paper, Time, and Money

WITH TERRA DOTTA SOFTWARE, YOU CAN:

- ✓ Locate anyone, anywhere, anytime
- ✓ Replace clerical with face time
- ✓ Centralize data storage and reporting
- ✓ Mitigate risk proactively
- ✓ Integrate seamlessly with your current systems
- ✓ Eliminate redundant data entry

Learn more at: [TERRADOTTA.COM](http://TERRADOTTA.COM)



Making a Difference in  
Higher Education Software



## NON-RESIDENT TAX PREP SOLUTION

for international  
students &  
scholars

### SPRINTAX PREPARES:

- Federal tax returns
- State tax returns
- ITIN applications
- Form 8843
- FICA

Non-resident  
tax partner of  
intuit  
**TurboTax** ✓

**Sprintax** is the Only Non-Resident Federal and State Tax preparation service available online for international students, scholars, teachers and researchers in the US.

**Sprintax** will help your students file accurate tax returns, meet the tax obligations of their academic visa and maximize their tax refund.

Visit [sprintax.com](http://sprintax.com) or email us at [partners@sprintax.com](mailto:partners@sprintax.com)



### Foreign Credential Evaluations, Inc.

*A trusted source for accurate, timely  
credential evaluations for over thirty years.*

An endorsed member of the Association of  
International Credential Evaluators, Inc.  
AICE: Setting the standard for credentials evaluation!

1425 Market Blvd., Suite 530, PMB 305  
Roswell, GA 30076  
Phone: 770-642-1108, Fax: 770-641-8381  
Email: [carolyn\\_christie@fceatlanta.com](mailto:carolyn_christie@fceatlanta.com)  
Website: [www.fceatlanta.net](http://www.fceatlanta.net)

Accepted by over

# 20,000

organizations worldwide

### English exams you can trust

Cambridge English: Advanced and Proficiency are now included in the Georgia Board of Regents' list of approved English language proficiency tests. Visit our table during the GAIE Winter 2016 conference to find out more.

[www.cambridgeenglish.org/gaie-institutions](http://www.cambridgeenglish.org/gaie-institutions)

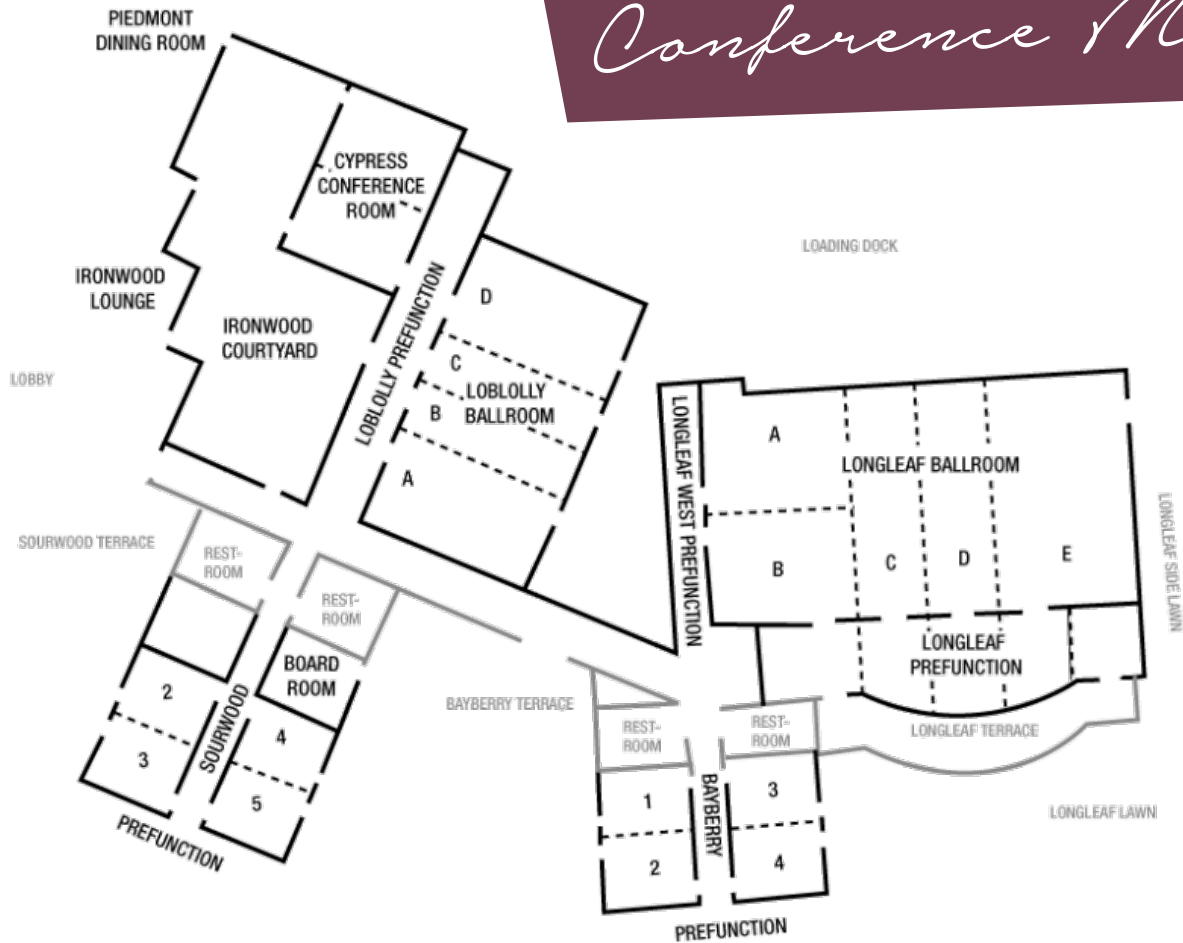


**Cambridge English**





# Conference Map



SAVE  
THE  
DATE

2016 NAFSA BI-REGIONAL  
CONFERENCE

REGION III ☀ REGION VII



NOVEMBER 4-10TH, 2016 ☀ NEW ORLEANS MARRIOTT