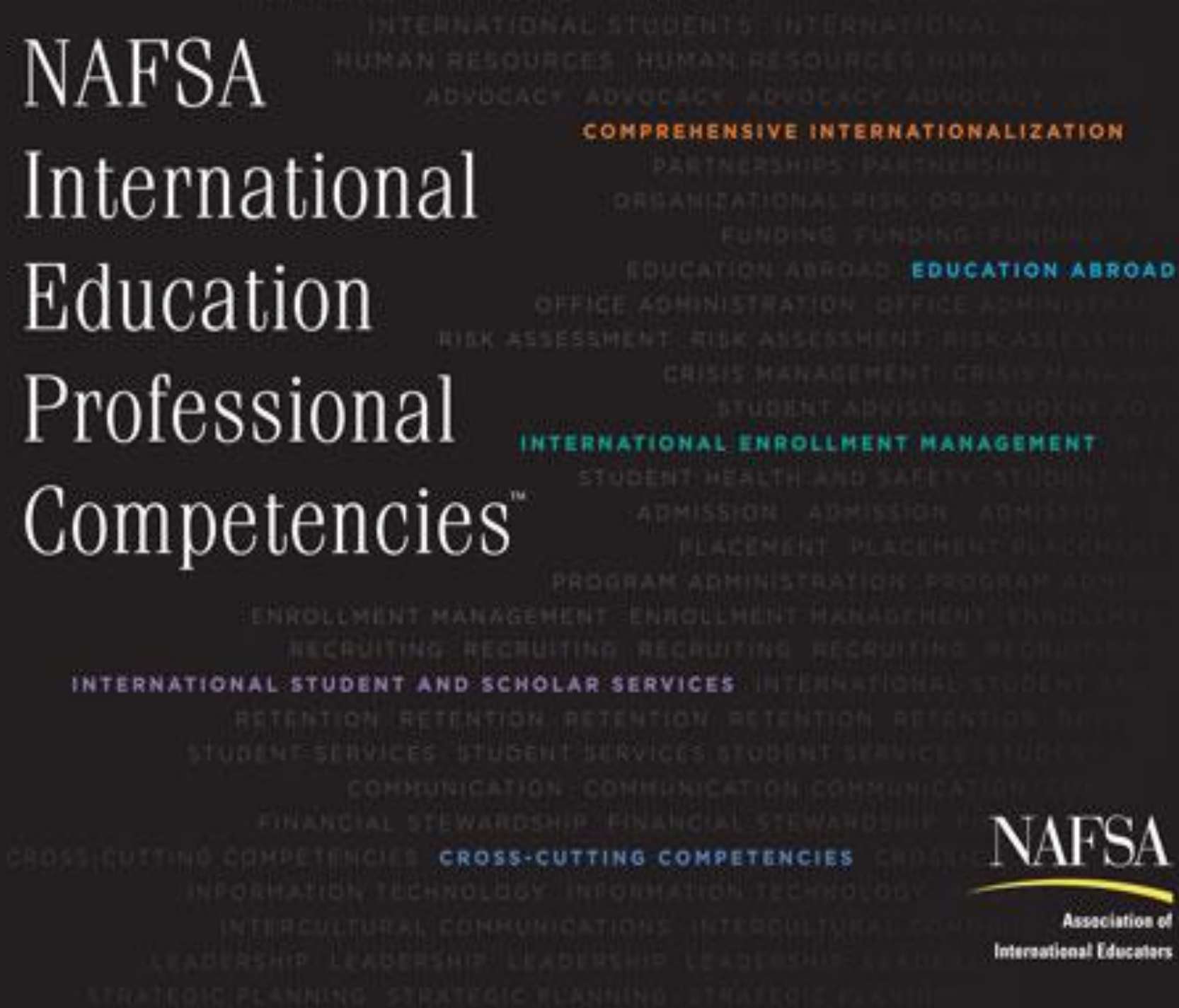


# NAFSA International Education Professional Competencies™

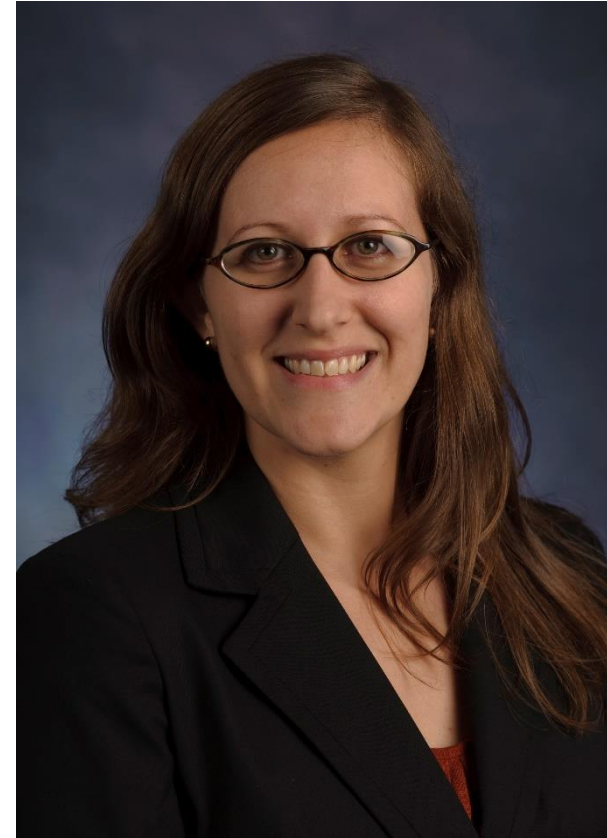


Implications  
for the field

# Who we are



Amanda Roshan-Rawaan  
Director, Int'l Programs & Projects  
OII – Georgia State



Maggie Miller  
International Education Manager  
OIE – Georgia Tech



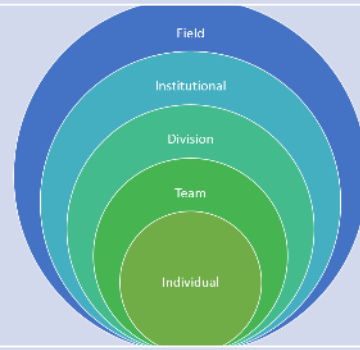
# Who's in the Room?



# Today's Agenda



**Competency  
Framework**



**Using the  
Competencies**



**Q&A**

# NAFSA International Education Professional Competencies™



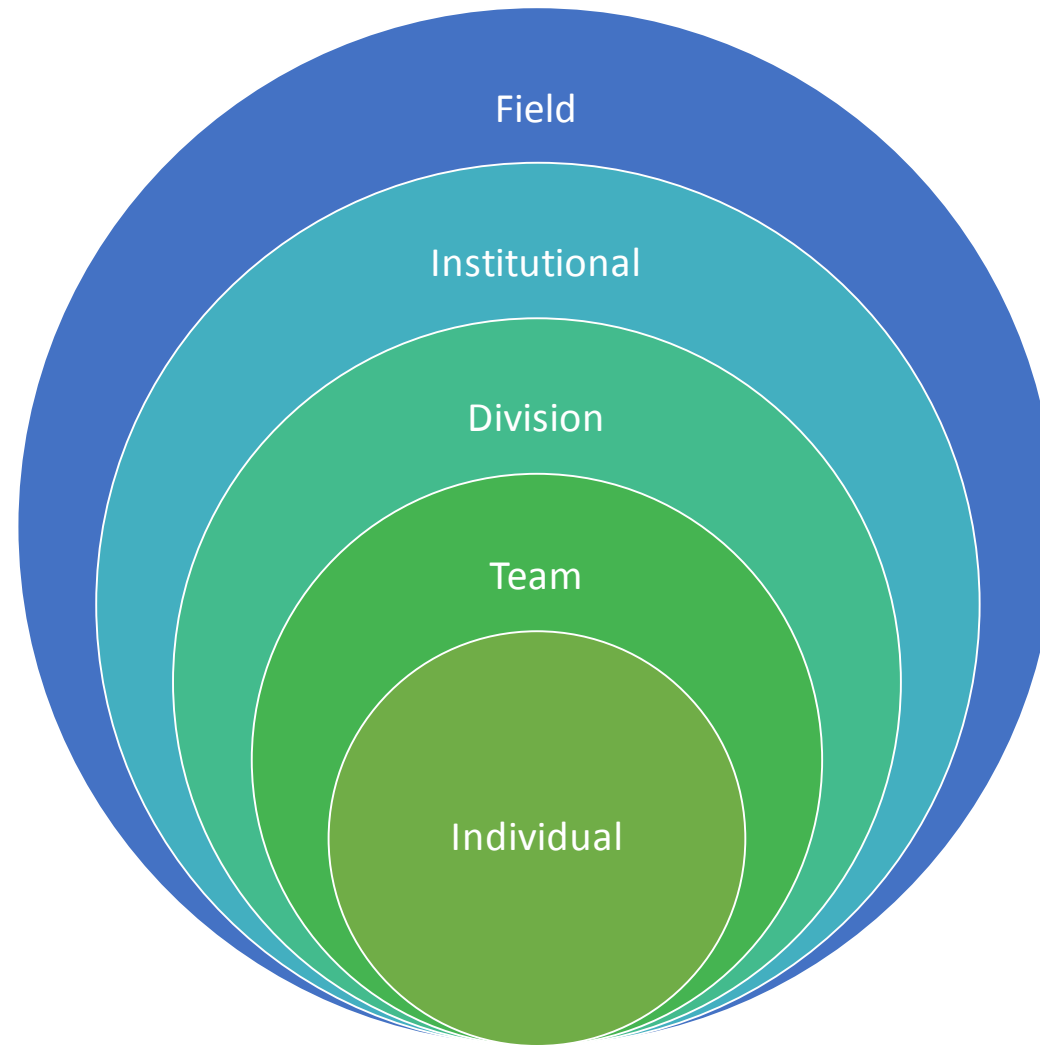


# NAFSA International Education Professional Competencies™

Orientation, Retention, and Student Services Programming			
RESPONSIBILITIES	DIRECT SERVICE	MANAGEMENT	STRATEGY AND POLICY
	<ul style="list-style-type: none"> <li>Advise student organizations.</li> <li>Conduct student orientation and workshops for international students and scholars regarding immigration, health insurance, employment, taxes, etc.</li> <li>Coordinate programming and events.</li> <li>Coordinate and train volunteers.</li> <li>Promote intercultural friendship.</li> <li>Promote programs to campus and community.</li> <li>Provide information on cross-cultural training for students, faculty, and staff.</li> <li>Provide information to community via appropriate communication channels about programmatic activities for cultural adjustment, cross-cultural learning, and leadership development.</li> <li>Provide resource information on accessing campus housing, library, recreation center, academic advising, etc.</li> </ul>	<ul style="list-style-type: none"> <li>Create programs that promote cultural adjustment, community, and academic success of international students and scholars and dependents.</li> <li>Define and promote culture learning on campus.</li> <li>Design orientation program and coordinate campuswide international events and activities.</li> <li>Develop a program promotion strategy.</li> <li>Evaluate the effectiveness of campus and community programs.</li> <li>Foster campus and community partnerships.</li> <li>Identify orientation needs of new international students and scholars, utilizing existing research and scholarship.</li> <li>Identify sources of funding for registered international student clubs.</li> <li>Oversee programming budget.</li> <li>Provide liaison to volunteers and community organizations.</li> <li>Provide staff development, tools, and resources necessary to achieve department and staff goals.</li> <li>Secure funds for and assess programming needs.</li> </ul>	<ul style="list-style-type: none"> <li>Consult as needed on topics such as educational systems and cultural norms.</li> <li>Define overall goals of the orientation program.</li> <li>Develop budgets and funding sources for programming and orientation.</li> <li>Oversee and assess the philosophy, means, and rationale for campus and community programs, including existing research and scholarship.</li> </ul>
KNOWLEDGE	DIRECT SERVICE	MANAGEMENT	STRATEGY AND POLICY
	<ul style="list-style-type: none"> <li>Awareness of various student cultural groups and programs on campus.</li> <li>Different communication approaches and techniques.</li> <li>Event planning and marketing.</li> <li>Understanding of adjustment process for international students and scholars.</li> </ul>	<ul style="list-style-type: none"> <li>Adjustment process to host country and university for international students and scholars.</li> <li>Effective strategies, programs, and workshops to help international students and scholars adjust.</li> <li>Event planning and marketing.</li> <li>Quality assessment.</li> <li>Responsibilities of different offices.</li> </ul>	<ul style="list-style-type: none"> <li>Budget principles.</li> <li>Fundraising strategies.</li> <li>Understanding of orientation programming content/purpose.</li> </ul>

(continued)

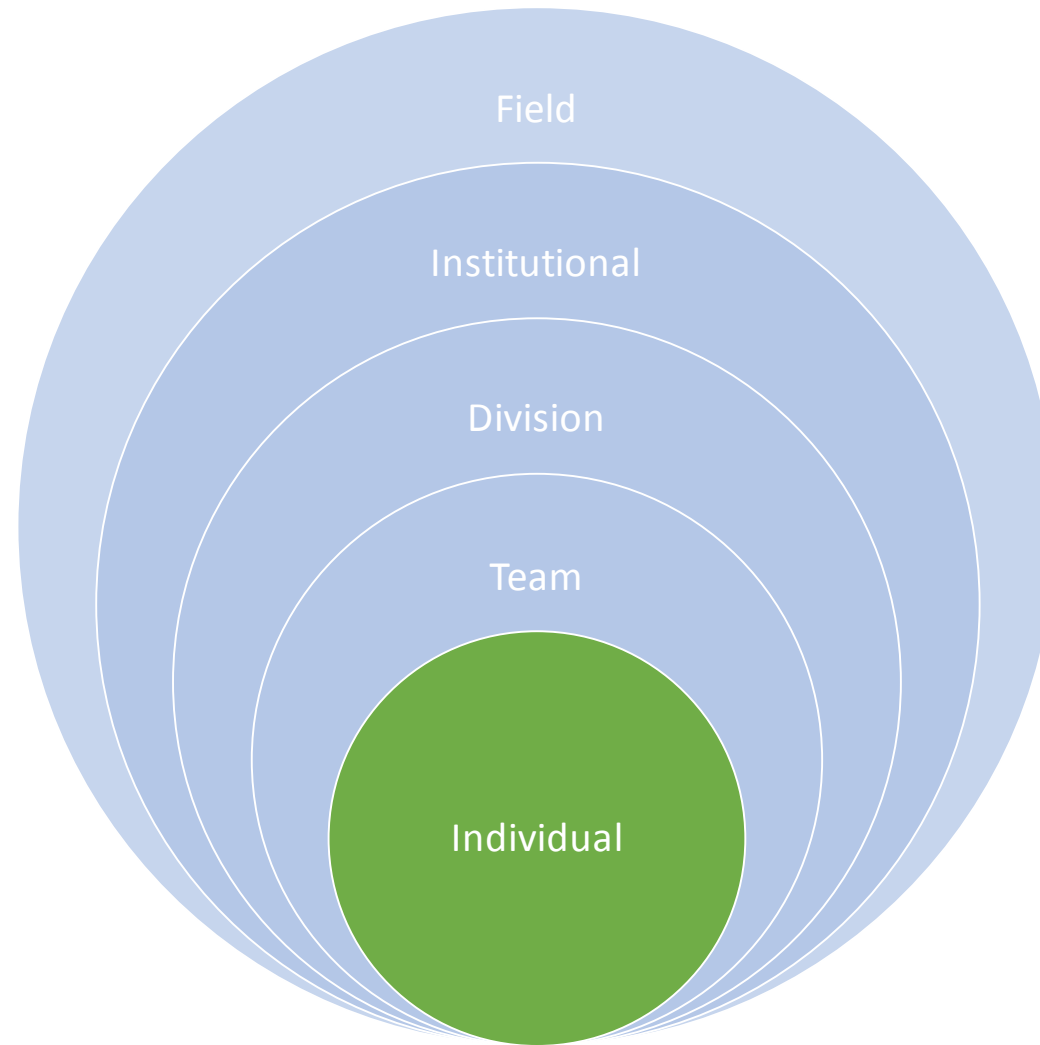
# Using the Competencies







# Using the Competencies



# PERSONAL DEVELOPMENT

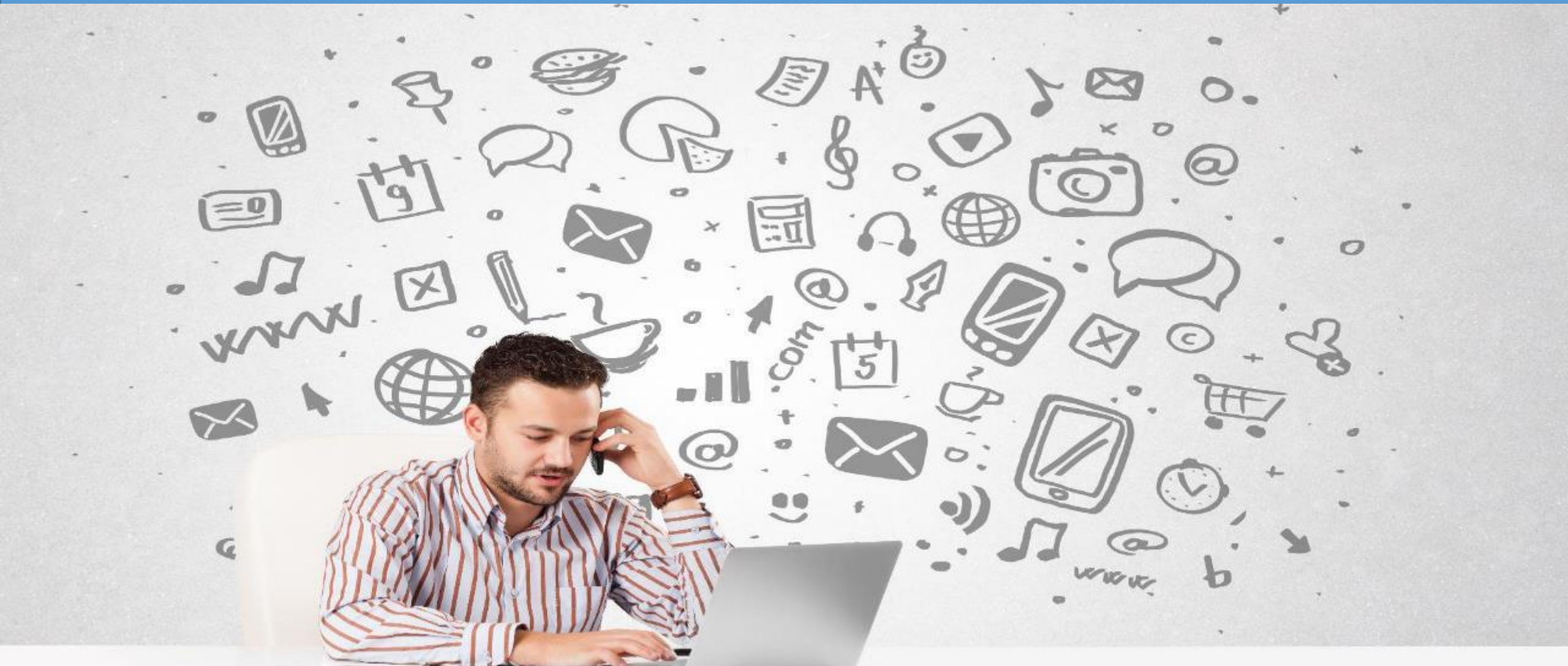


# Strategic Career Development





# Managing Up & Across





# Your Turn

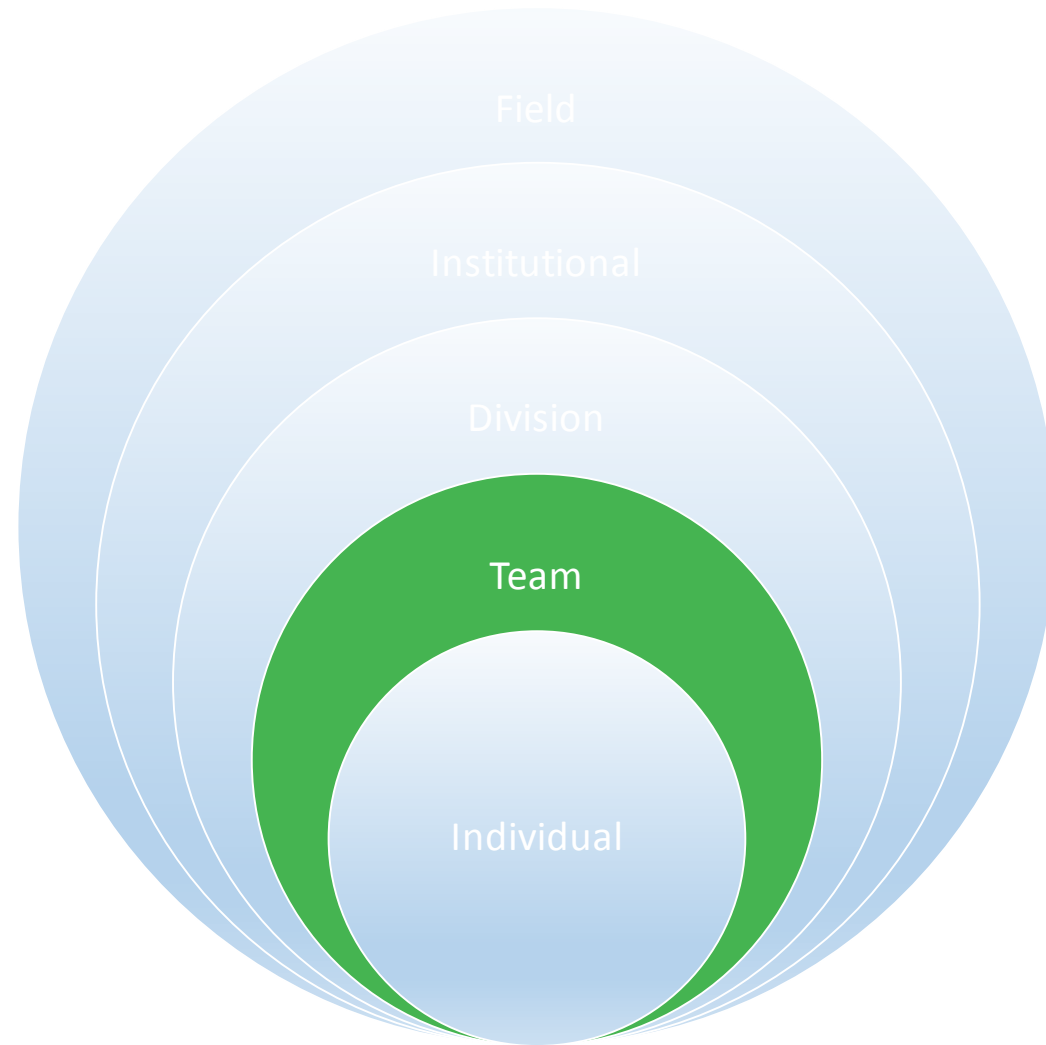




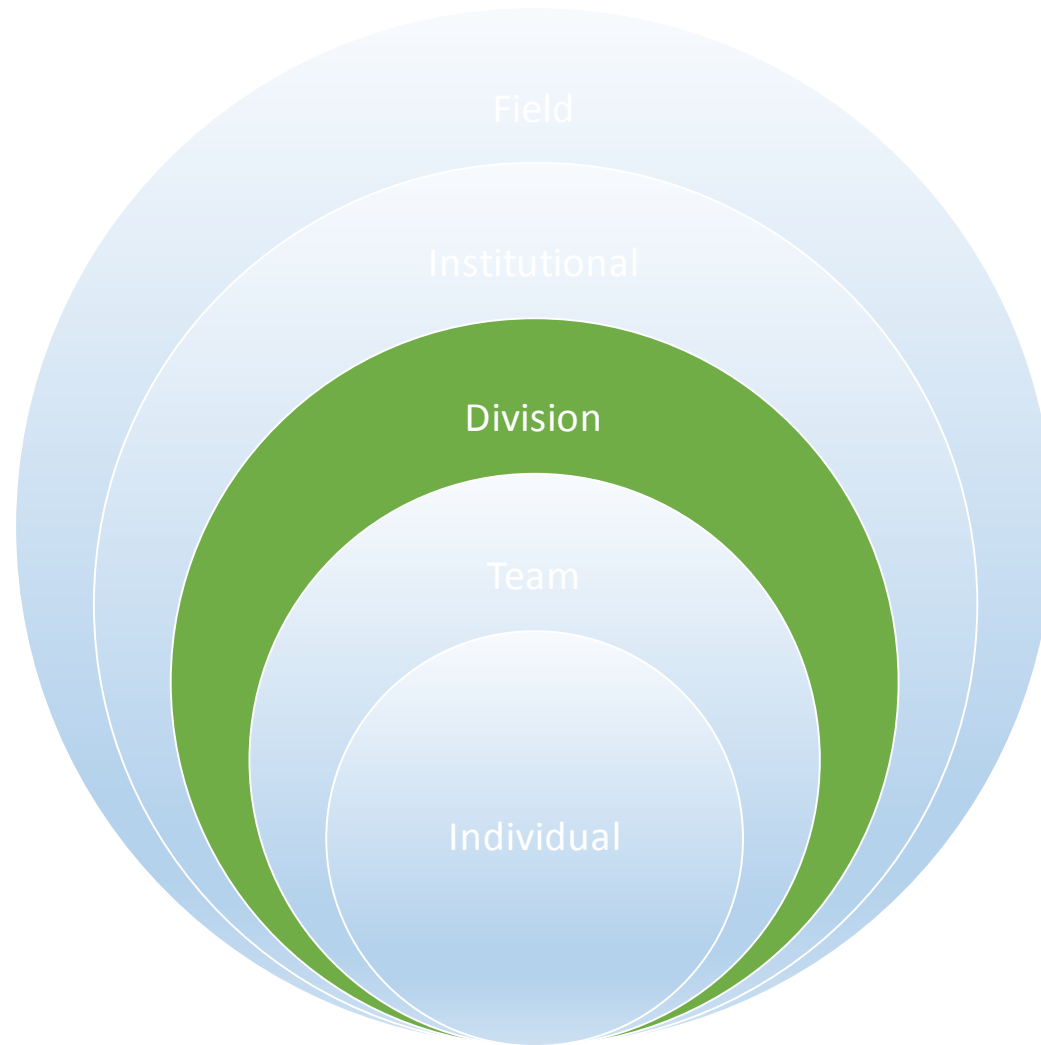
# Share with Your Neighbor



# Using the Competencies

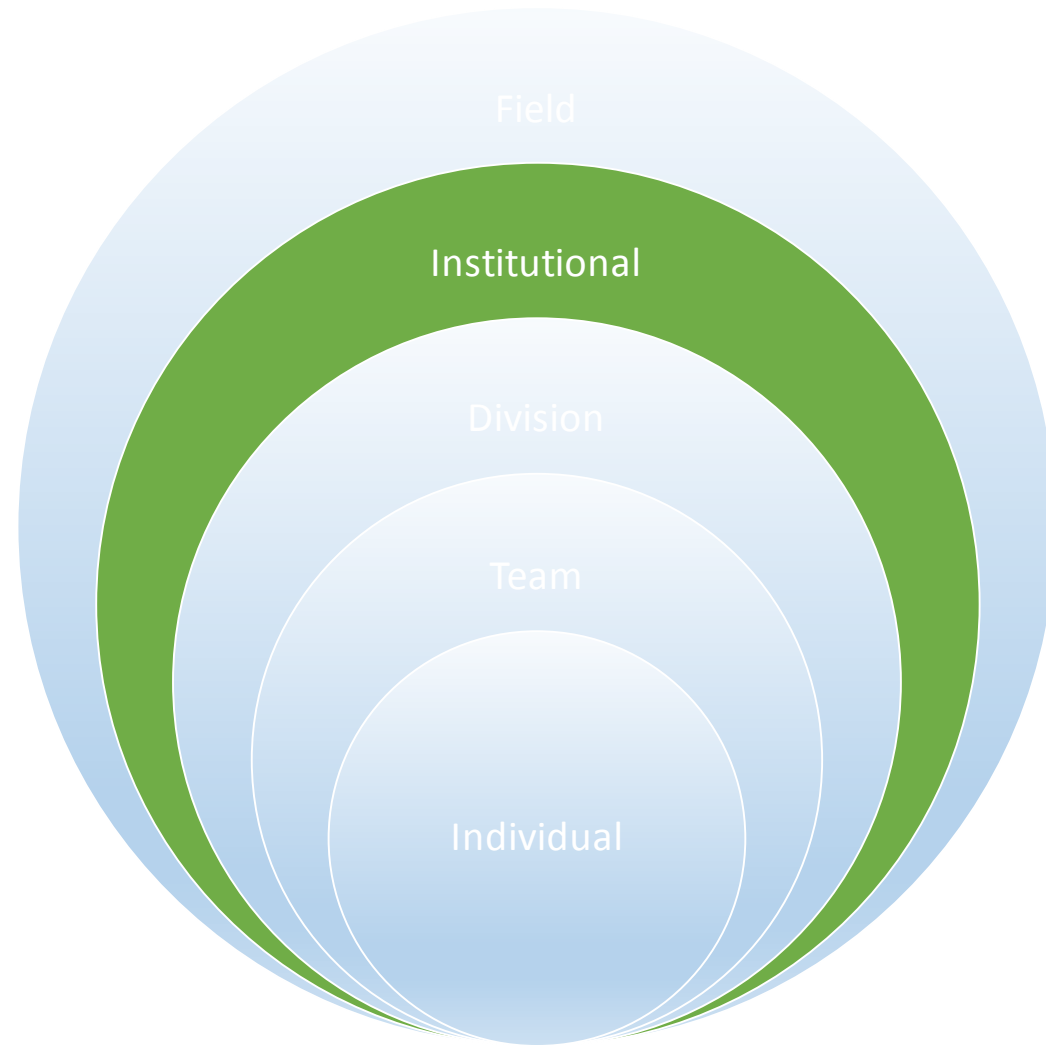


# Using the Competencies

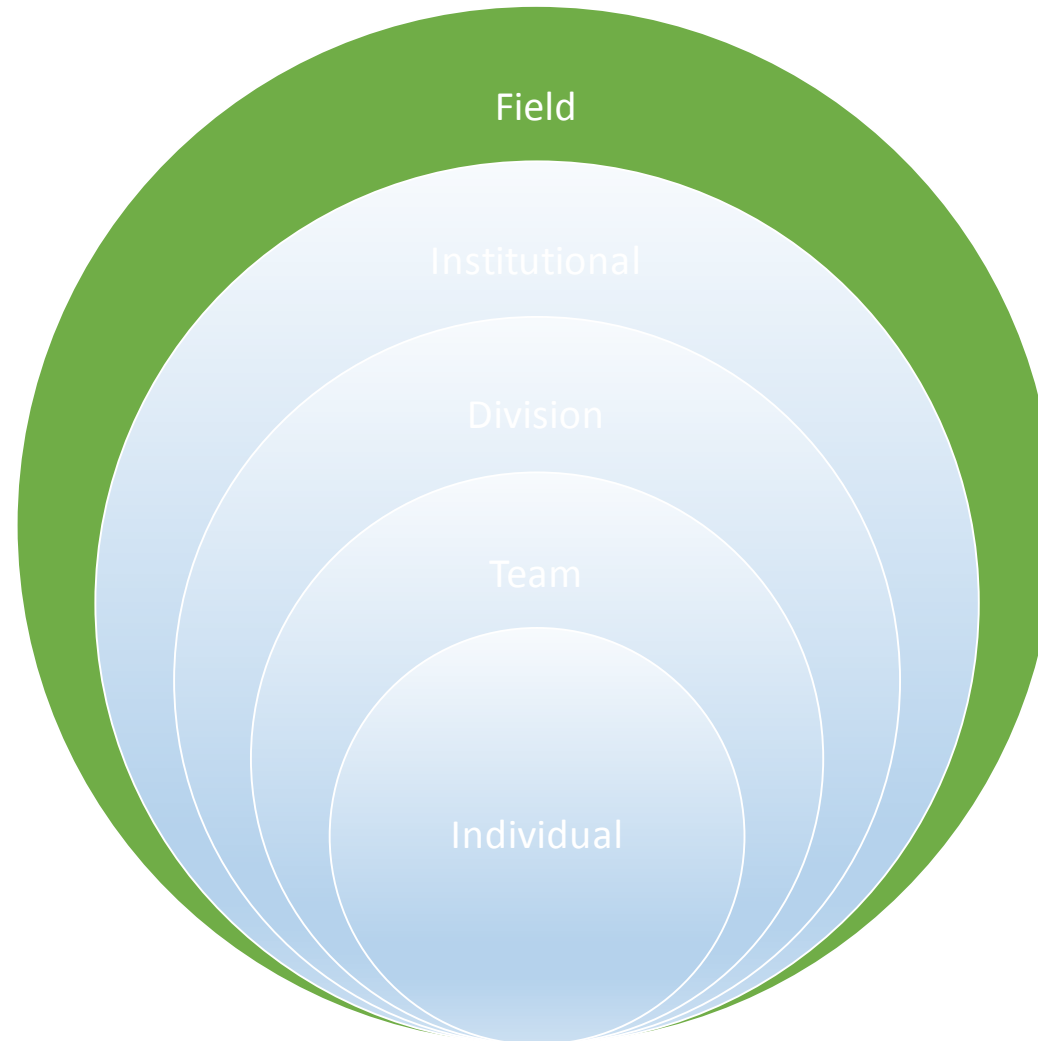




# Using the Competencies



# Using the Competencies



# You Tell Us

Which competency do you want to see addressed at future GAIE conferences?

# Questions & Answers





**Please fill out your  
evaluation and thank  
you for coming!**