

**Promoting Student Leadership
from the Ground Up in Times
of Transition - Committees and
the International Student
Association**

Aleksandra Ninova-Parris

Table of Contents

- About the Presenter
- Kennesaw State University (KSU)
- International Student Association (ISA)
- ISA Committees:
 - Purpose
 - Selection
 - Incentive
 - Activities
 - Outcomes
 - Goals
- Conclusion
- Q&A

Who is the Presenter?

Kennesaw State University

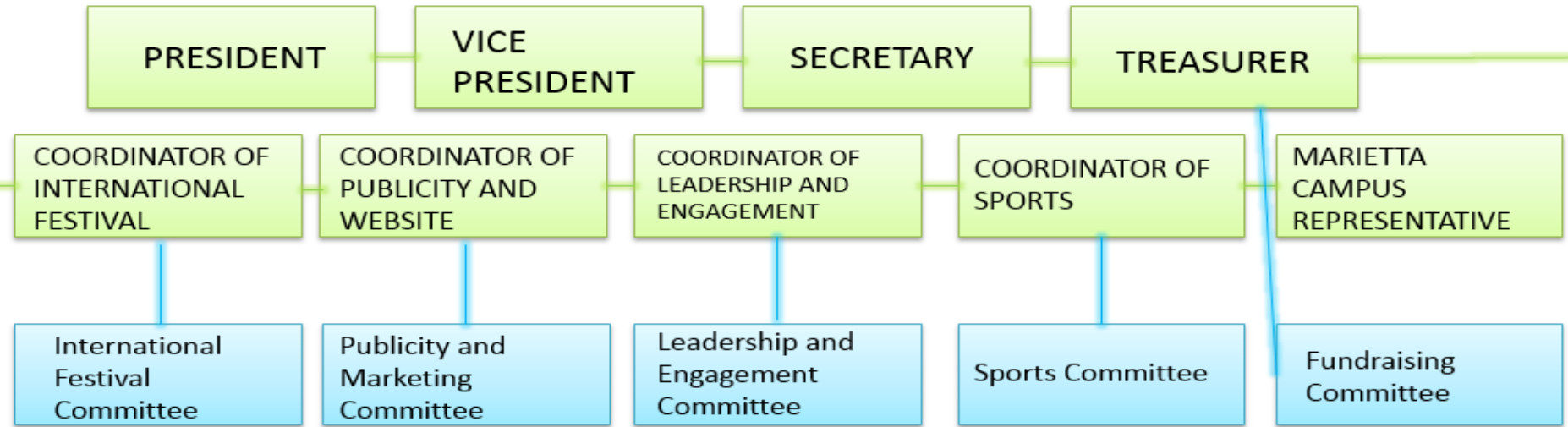
- Founded in 1963.
- Immense growth over 53 years.
- Consolidated with Southern Polytechnic State University in Fall 2015.
- Spring 2016 Data:

International Student Association



- Founded in 1990, by students, for students.
- KSU Mission- and Vision-based line item organization.

• Structure:



Committees

- Program initiated in Fall 2015.
- Purpose.
- Selection.
- Incentive.
- Activities.
- Outcomes.
- Goals

Committees - Purpose

- Purpose: To assist ISA Coordinators with planning and execution of events, as well as to expose students to a leadership role and teach lifelong skills.

Committees - Selection

- Selection:

- Enrolled in a minimum of 6 credit hours per semester.
- Minimum GPA – 2.0.
- First come, first served basis to sign up.
- Interview with ISA Advisor, ISA President, and ISA Vice-President.
- Subject to vote by ISA Executive Board.

- Incentive:

- 20 volunteer hours per semester.

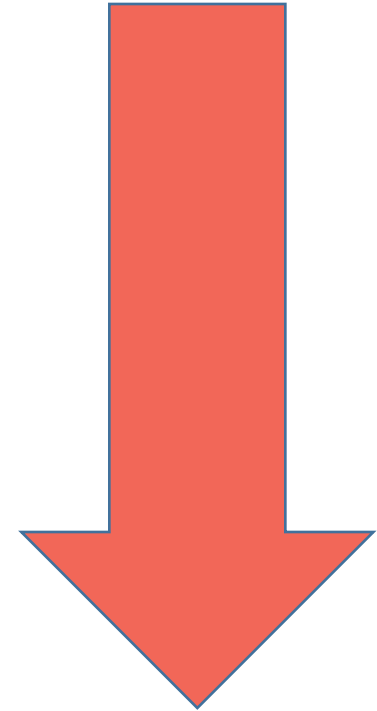
Committees - Activities

- Activities:
 - Minimum of 8 (bi-weekly) meetings, maximum of 25 meetings per semester
 - Bi-weekly events.

Committees - Outcomes

- Outcomes: Student growth and leadership; opportunities for reduced, yet active involvement.

ISA Executive Board



Committee Member

Committees - Goals

- Goals:
 - Program growth.
 - Student growth.
 - Include Coordinators in selection process.
 - Recruit earlier for:
 - Better involvement with the whole ISA Executive Board.
 - Joint training with ISA, SAs, International Peer Leaders.
 - Create leaders in and beyond the classroom and the institution.

Conclusion

Q & A